



Monterey Regional Waste Management District

draft



Fiscal Year 2008-2009

Annual Report



# Contents

**draft**

- The Monterey Regional Waste Management District ..... 1
- Message From the General Manager ..... 2
- Board of Directors ..... 2
- Fiscal Year 2008-2009 Key Initiatives ..... 3
- The Last Chance Mercantile ..... 4
- Household Hazardous Waste Collection Program ..... 5
- Waste Accepted, Recycled and Disposed from MRWMD ..... 6
- Materials Recovery Facility Recycling Program ..... 7
- Waste Disposal at the Monterey Peninsula Landfill ..... 8
- Landfill Gas Project ..... 8
- Public Education and Outreach ..... 9
- Employees ..... 10-11
- District Awards/Certificates ..... 11
- Financial Information ..... 12
- Municipal Waste Diversion Rates ..... 13

COVER PHOTO: In FY 08-09 the MRWMD Agricultural Plastic Recycling Pilot Program diverted more than 1,500 tons of drip tape, mulch and fumigation film.



**draft**

# The Monterey Regional Waste Management District

## Mission Statement

It is our mission to provide the highest quality, cost-efficient, integrated waste management services to the greater Monterey Peninsula, while preserving our environment and protecting public health through the reduction, reuse, recycling, and safe disposal of our wastestream.

## Service Area

The MRWMD service area includes: Carmel-by-the-Sea, Del Rey Oaks, Marina, Monterey, Pacific Grove, Sand City, Seaside, and the unincorporated areas of Big Sur, Carmel Highlands, Carmel Valley, Castroville, Corral De Tierra, Laguna Seca, Moss Landing, Pebble Beach, San Benancio, and Toro Park. The District covers a total of 853 square miles. The population currently served is about 170,000.

## District Facilities

Last Chance Mercantile, Household Hazardous Waste Collection Facility, Materials Recovery Facility, Compost Site, Monterey Peninsula Landfill, Landfill Gas Power Project

---

## FY 08-09 MRWMD Fast Facts

- 336,757 Tons of solid waste received
  - 129,873 Tons Recycled or Reused
  - 713 Tons of Reusable Goods Salvaged for Sale at Last Chance Mercantile
  - 206,884 Tons Disposed in Landfill
  - 61% of Material Received at Materials Recovery Facility Recycled or Reused
  - 700 Tons of Electronic Waste and Hazardous Materials Received
  - 296 Tons of TVs and CRTs Recycled
- 

## Operating Schedule

Landfill Disposal Site

Monday - Friday ..... 6:30 a.m. - 5:00 p.m.

Saturday ..... 8:00 a.m. - 4:30 p.m.

Last Chance Mercantile

Monday - Friday ..... 8:00 a.m. - 5:00 p.m.

Saturday ..... 8:00 a.m. - 4:30 p.m.

Household Hazardous Waste

Monday - Friday ..... 8:00 a.m. - 5:00 p.m.

Saturday ..... 8:00 a.m. - 4:30 p.m.

Administration Building

Monday - Friday ..... 8:00 a.m. - 5:00 p.m.

Closed on Sundays and these holidays: Memorial Day, 4th of July, Labor Day, Thanksgiving Day, Christmas Day and New Year's Day.

## Message From the General Manager



These are challenging times in the solid waste industry. Our traditional method of funding operations through landfill disposal fees has been compromised by the economic slowdown and by success in achieving waste diversion goals. We're rethinking the nature of our operations and find ourselves increasingly replacing the word "waste" with "resource". The challenge going forward is how to reduce, reuse, and then recycle. We're also exploring new opportunities to create partnerships, to extract energy from the materials we receive, and to identify alternative sources of revenue to support our operations.

We're working on these issues with our member agencies, board of directors and employees. These are challenging but also exciting times. We continue to see strong public support locally for expanding recycling programs and for maximizing the production of renewable energy. The State is poised to mandate commercial recycling and the 5 megawatts of "renewable" energy produced by the District has never been more valuable. The MRWMD is ready to meet these challenges and to continue to build on our successful and cost effective programs. Thank you for doing your part to reduce, reuse and recycle.

William Merry - General Manager



## FY 08-09 Board Members

**Leo Laska, Chair**  
Pebble Beach

**Sue McCloud, Vice Chair**  
Carmel-by-the-Sea

**Gary Bales**  
Pacific Grove

**Libby Downey**  
Monterey

**Ken Gray\***  
**Bruce Delgado\*\***  
Marina

**Don Jordan\***  
**Ian Oglesby\*\***  
Seaside

**David Pendergrass**  
Sand City

**Joseph Russell**  
Del Rey Oaks

**Ila Mettee-McCutchon\***  
**Jane Parker\*\***  
Monterey County

### FY 08-09 Board of Director Service Awards:

**Leo Laska, 5 years**

**Rob Wellington, Legal Counsel,**  
35 year Longevity Award

**Ken Gray, 5 years**

**Gary Bales, 40 years**

\* Term ended mid-year \*\*Appointed mid-year

# Fiscal Year 2008-2009 – Key Initiatives

# draft

## July 2008

Awarded a contract for the installation of 13 additional landfill gas monitoring probes.

## August 2008

The Solid Waste Association of North America has awarded the MRWMD a 2008 Bronze Excellence Award for its Household Hazardous Waste Program.

## September 2008

Authorized a five year lease purchase agreement for a GE Jenbacher Model JGS 420 Engine/Generator which will increase the landfill-gas-to-energy generating capacity to 5 megawatts of renewable power.

## October 2008

Authorized the purchase of heavy equipment diesel particulate mufflers for early compliance credit with AB 32 Emissions Regulations

## November 2008

To recover operational costs, the fee for biosolids processing and disposal was increased from \$25 to \$30 per ton, effective 1/1/09.



## January 2009

The mid-year budget shows a reduction in the budgeted revenue due to decreased refuse coming into the site and reductions in values of recycled materials. Reductions in expenditures are being achieved primarily through a hiring freeze, delayed maintenance spending, reduced cost of fuels and delayed capital purchases.

## April, 2009

The General Manager was authorized to sign an interim agreement with PG&E to increase renewable energy sales revenue.

## May 2009

Preliminary FY 09-10 budget adopted including \$17,540,000 in revenues, operating expenses of \$16,740,000, and non-operating expenses of \$79,000 resulting in net income of \$721,000. Capital project expenditures total \$2,203,500 and principal payments on bond and debt obligations are \$1,815,000. Unrestricted cash will decrease by \$817,500 for the fiscal year. The budget includes no new staff positions, continued reductions in expenses, and continued delays in capital spending.





## Reuse: Always in Fashion at the Last Chance Mercantile

What's the best way to lower your carbon footprint? Emerging studies on this topic claim "reuse" can dramatically benefit the environment. In short, reusing products avoids all the energy and emissions associated with the production and consumption of new stuff.

The MRWMD has long made reuse a priority. What began in 1991 as a monthly auction of reusable goods is today an eclectic store with an ever changing inventory of one-of-a-kind items ranging from scrap lumber, to furniture, clothing and household treasures. We also offer free paint and sell low cost compost bins and supplies along with bag-your-own compost, wood chips and top soil.

Today, the Last Chance Mercantile provides a convenient drop-off service for reusable goods and electronic waste recycling. We don't know of any other landfill that features a reuse store at the entrance to make it easy to reduce, reuse and recycle. A trip out to the District isn't complete without a stop at the Last Chance Mercantile.

**facebook**

Find us on Facebook and become a fan of the Monterey Regional Waste Management District and Last Chance Mercantile! We invite you to become a fan and share your experience with our programs and stay up-to-date on new developments at the District.

## Free Electronic Waste Collection at the Last Chance Mercantile

	FY 04-05	FY 05-06	FY 06-07	FY 07-08	FY 08-09
CRTs Collected	3,864	4,443	9,699	10,071	11,375
Total Pounds	205,157	268,590	483,855	513,912	592,681

The number of televisions and monitors (CRTs) collected in the MRWMD electronic waste recycling program at the Last Chance Mercantile increased 13% in FY 08-09 over the prior year. Total electronic waste tonnage (including cell phones, printers and computers) collected in the program has totaled more than 2.5 million pounds since 2002, all of which has been kept out of the landfill.



**draft**

## Household Hazardous Waste Collection Program

During FY 08-09 more than 10,000 local participants dropped off 1.4 million lbs of hazardous materials, an increase of 13% over the prior year.

For residents within the MRWMD service area, the hazardous waste collection program offers a free drop-off for items such as: household batteries, fluorescent light bulbs, paints, varnishes, pesticides, cleaners, and used motor oil. When visiting, be sure to check the Last

Chance Mercantile “drop and swap” area where reusable paint, stain, varnish, and garden products are made available free of charge.

The District's HHW program, one of the first in the State in 1987, received a Bronze Excellence Award from the Solid Waste Association of North America in September, 2008.

### Household Hazardous Waste Collection Summary (in lbs)

Material Type	FY08-09
Flammable solids/liquids	61,010
Latex Paint	192,465
Oil Base Paints	54,912
Poisons, Reactive and Explosive	14,655
Acid, Base, Oxidizer, PCB containing	31,356
Auto Batteries	62,843
Motor Oil, Used Oil Filters, Antifreeze	88,039
Mercury Thermostats	94
Fluorescent Lamps	9,284
Household Batteries	18,169
Electronic Waste (televisions, CRTs)	592,681
Universal Waste (other electronics)	240,630
Aerosol containers and Compressed Gas Cylinders	16,330
Other Materials	21,441
<b>Total Pounds Collected</b>	<b>1,403,909</b>
<b>Total Visits from Residents/Households</b>	<b>10,115</b>



### What is Household Hazardous Waste?

Products are hazardous if the words danger, warning, caution, poisonous or flammable appear on the label. California law prohibits the disposal of such products in your trash or the Monterey Peninsula Landfill.



## Waste Accepted, Recycled and Disposed from MRWMD Member Agencies 7/1/08-6/30/09

FY 08-09 Tons	Carmel	Del Rey Oaks	Marina	Monterey County	Monterey	Pacific Grove	Pebble Beach	Sand City	Seaside
Accepted	11,635	1,654	21,113	93,544	45,085	16,781	13,643	2,588	45,885
Diverted									
Asphalt / Concrete	718	58	804	3,163	1,823	709	881	711	4,847
Greenwaste	2,213	266	1,715	10,610	4,662	2,940	3,770	56	2,532
MRF Diversion	1,921	149	2,462	10,475	5,865	2,171	2,313	468	3,714
Source Separated	2	0	20	1,056	30	6	3	3	24
Biosolids Compost				17,881					
<b>Total Diverted</b>	<b>4,853</b>	<b>473</b>	<b>5,001</b>	<b>43,186</b>	<b>12,380</b>	<b>5,826</b>	<b>6,967</b>	<b>598</b>	<b>21,117</b>
Landfilled	6,782	1,181	16,112	50,358	32,705	10,954	6,676	1,990	24,768



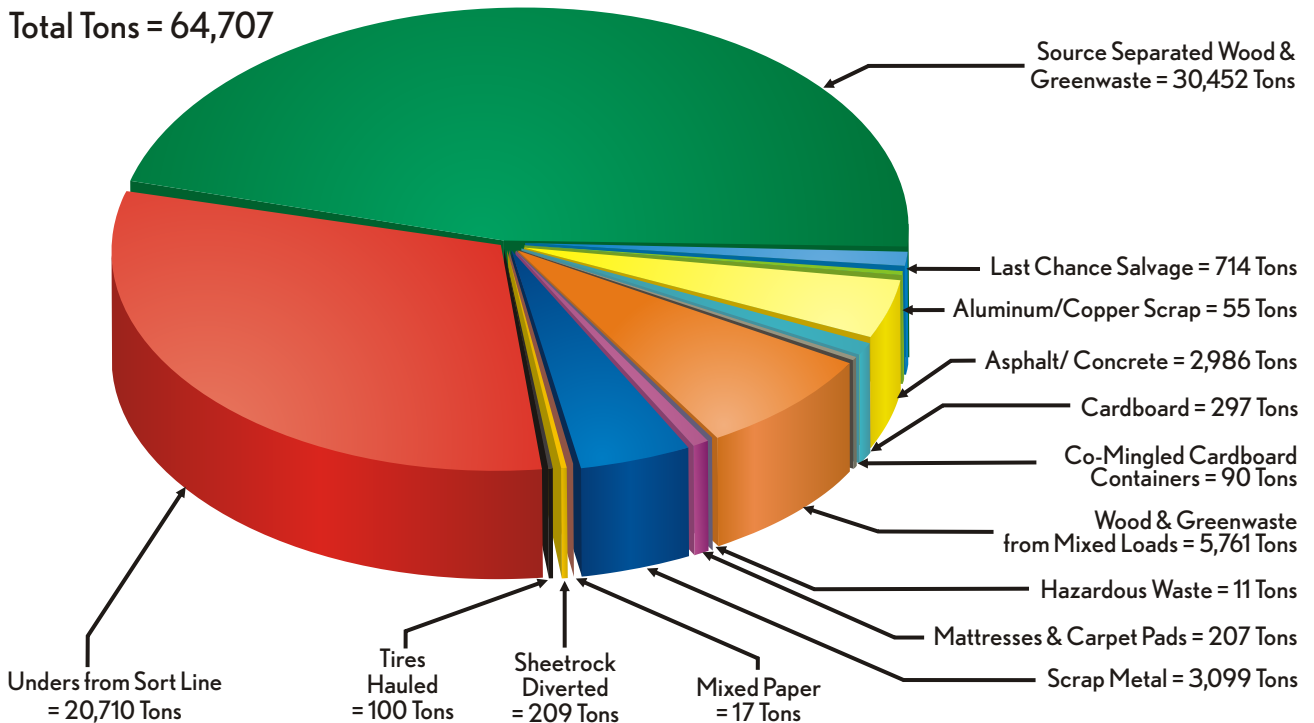
## Materials Recovery Facility Recycling Program

The Materials Recovery Facility (MRF) is the centerpiece of the District's waste processing and diversion program. The MRF receives commercial and "self-haul" vehicles carrying a wide range of construction and demolition material, landscaping trimmings, and general refuse. The MRF also receives clean loads of green waste from curbside collection programs and landscapers, and clean loads of wood waste from construction projects.

As loads are emptied at the MRF, District staff members are on the lookout for reusable goods such as bicycles, furniture and clothes, which are salvaged on the spot and sent to the Last Chance Mercantile reuse store (many customers take their reusable goods to the Last Chance first which saves money and resources). Completed in 1996 at a cost of \$9.6 million, this 95,000-square-foot building houses conveyors and sorting stations where workers recover various materials such as wood, yard waste, sheetrock, concrete, metal, cardboard, bottles, cans, and inert materials such as soil and gravel.

### MRF Diverted Materials – FY 2008-2009

Total Tons = 64,707



# Waste Disposal at the Monterey Peninsula Landfill

Waste that has not been reduced, reused or recycled is ultimately disposed of in the Monterey Peninsula Landfill. In FY 2008-09, 206,884 tons of waste were buried in the Landfill compared with 225,451 tons in FY 07-08, and 219,772 tons in FY 2006-07.



In accordance with the District's Landfill Site Master Plan, the remaining refuse capacity is in excess of 39 million tons, enough capacity to last approximately 100 years at present disposal rates.

To safeguard the environment, the Monterey Peninsula Landfill is constructed with a composite liner system which consists of:

- A 2 foot thick layer of compacted clay which serves as a primary clay liner.
- A 60-mil thick high density polyethylene geo-membrane liner.
- A 2.5 foot thick sand drainage/operations layer.



## Landfill Gas Project Generates Renewable Energy



The MRWMD landfill gas recovery program, established in 1983, was one of the first in the nation to produce electricity from methane gas produced by waste decomposition in the landfill. In the Summer of 2009, the MRWMD landfill-gas-to-energy program reached a new milestone as power output increased from 4.6 to 5 megawatts.

The District's four engine generators consume 70,000 metric tons of methane gas while producing enough electricity to supply all the District's needs. Surplus power, enough to supply 5,000 homes annually, is sold to Pacific Gas & Electric. Total power produced to date is over 375 million kilowatt-hours and total project revenues have surpassed \$21 million.

# Public Education and Outreach

In 2008, the MRWMD “Bag Monster” began making appearances at parades and special events. Visually portraying the 540 bags per capita that are consumed each year in California, the bag monster sends a message to reduce, reuse and recycle. Plastic bags have come under new scrutiny State-side due the steady increase in the number of bags given out, low recycling rates, and the litter problem plastic bags pose in the environment. Locally, all Peninsula curbside recycling programs now accept plastic bags.

## Small Planet School Outreach

School lunches can generate as much 67 lbs of waste per year, per student. Packing “zero waste” school lunches was a big focus of the “Small Planet School Education Program” in FY 08-09. Outreach included school assemblies, classroom presentations, and school compost projects.

## Waste Free Schools Program

Marshall Elementary was one of the MRWMD’s “Waste Free Schools” in FY 08-09. This comprehensive recycling and waste reduction promotion helped reduce lunch room waste by 50% and overall school disposal by 30%. Marina Del Mar and North Monterey County Middle School also implemented the Waste Free Schools program and five additional schools (Forest Grove Elementary, Robert Down Elementary, PG Middle School, Los Arboles Middle School and Castroville Elementary) received support in their lunchroom waste reduction efforts.



In FY 08-09, the MRWMD recruited volunteers to serve as a “Green Team” (also known as the “Rot Squad”), to assist with compost education and outreach. Armed with a passion for the environment and a crash course in the art and science of home composting, we’re grateful for the time and energy they devoted to help out at Compost Workshops, Farmers Market Compost Clinics, and Zero Waste events.

## FY 08-09 Public Education Fast Facts

- 1,527 Students Toured MRWMD Operations
- 6,434 Elementary Students Attended an MRWMD School Assembly or Presentation
- 348 People attended Compost Workshops
- 20 Schools Received Recycling Bins



## MRWMD Employees

District staff are divided among eight key areas of operation including: administration, equipment maintenance, finance, household hazardous waste program, management, Last Chance Mercantile, Materials Recovery Facility, and site operations which includes landfill operations, the landfill gas-to-energy program, scale house, and site support. Active staffing levels were reduced in FY 08-09 to 120 positions from 127 the prior year.

### Charlie Benson & Jonathan Livingston Seagull Awards

July 1, 2008 – June 30, 2009

Date	Award	Given To	Presented By
9/24/08	Jonathan Livingston Seagull	Kimberle Herring	Management
11/24/08	Charlie Benson	Baldo Trujillo	Edward Kalisz
1/28/09	Charlie Benson	Sergio Almanza	David Wanzong
3/25/09	Charlie Benson	Francisco Garcia	Clyde Walkup
3/25/09	Charlie Benson	Ken Harder	Ed Kalisz
4/30/09	Charlie Benson	Pompey Morales	Holly Yanez
4/30/09	Charlie Benson	Petra Lozano	Holly Yanez
4/30/09	Charlie Benson	Frank Patague	Holly Yanez
4/30/09	Charlie Benson	Javier Ayala	Estela Cerna
4/30/09	Charlie Benson	Fernando Becerrill	Estela Cerna
6/25/09	Charlie Benson	Javier Ayala	Ed Kalisz
6/25/09	Charlie Benson	Raul Zamudio	Leo Martinez, Jr.
6/25/09	Charlie Benson	Fernando Becerrill	Leo Martinez
6/25/09	Charlie Benson	Clemente Alvarez	Leo Martinez
6/25/09	Charlie Benson	Francisco Ponce	Leo Martinez



## Employee Longevity Recognition

Years of Service	Awarded July 1, 2008 - June 30, 2009
20	Tina Reid, Richard Norton
15	Donald Prescott, George Sayre,
5	Heriberto Carrasco, Genaro Jaurrieta, Clemente Alvarez, Clementina Ventura, Jeaneva Fresquez, Charles Rees
3	Tanya Lewis, Scott Curry, Mel (Melesio) Campa, Jose Luis Felix-cortes, Eva Vasquez, Jeff Lindenthal, Amber Watson

## District Awards

Bronze Excellence Award,  
Household Hazardous Waste Program, 2008

Best Environmental Business, May 2008

Gold Excellence Award, Landfill Gas Utilization,  
October 2007

2007 Adopt-A-Highway, Volunteer of the Year,  
Monterey County

Best Reuse Program in California, August 2007

2003 "Landfill Methane Outreach Program  
Community Partner" Certificate

2000 "Outstanding Public Agency of the  
Gold Rush Chapter Year"

1999 "Innovation in Government Award"

1999 "Trash Cutter Award" for  
Best Regional Waste Reduction Program

1998 first ever Gold Excellence Award for  
"Best Solid Waste System in North America"

Solid Waste Association of North America

Monterey County Weekly Readers Poll

Solid Waste Association of North America

CalTrans

California Resource Recovery Association

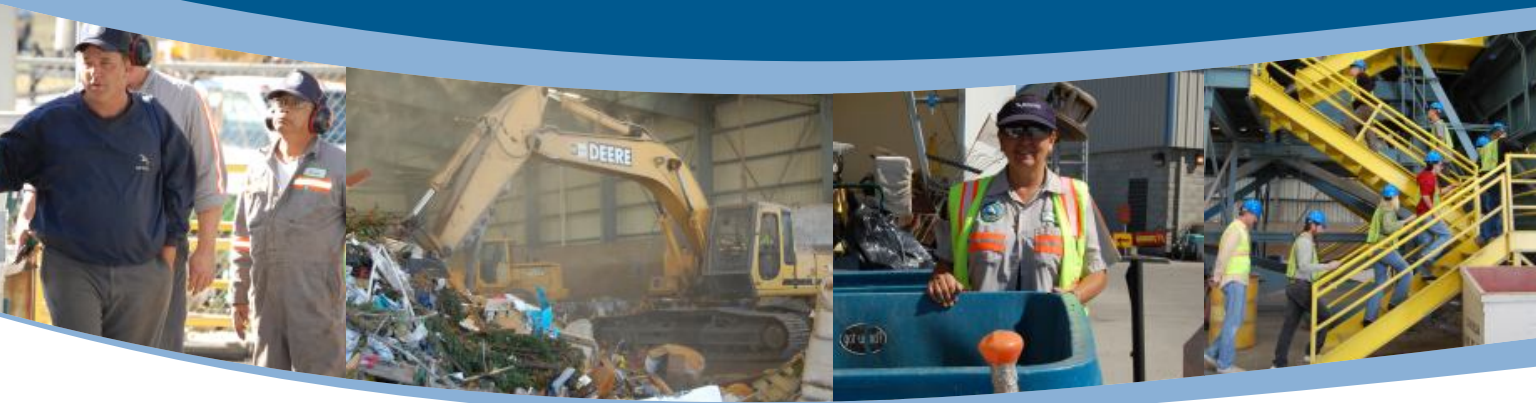
U.S. Environmental Protection Agency

Solid Waste Association of North America

California Resource Recovery Association

California Integrated Waste Management Board

Solid Waste Association of North America



## Financial Information

### Income

Source of Funds	FY 2005-06	FY 2006-07	FY 2007-08	FY 2008-09	FY 2009-10 Budgeted
Disposal Fees	\$13,054,000	\$12,915,000	\$13,563,000	\$13,125,000	\$12,870,000
Material Sales	\$1,795,000	\$1,978,000	\$2,026,000	\$1,568,000	\$1,395,000
Landfill Gas Power	\$1,511,000	\$1,918,000	\$2,104,000	\$1,905,000	\$3,075,000
Other Revenue <sup>A</sup>	\$960,000	\$997,000	\$874,000	\$594,000	\$438,000
<b>Total Income</b>	<b>\$17,320,000</b>	<b>\$17,808,000</b>	<b>\$18,567,000</b>	<b>\$17,192,000</b>	<b>\$17,778,000</b>

<sup>A</sup> Income from investment earnings, rents/leases, operational services, HHW fees, and finance charges.

### Expenditures

Use of Funds	FY 2005-06	FY 2006-07	FY 2007-08	FY 2008-09	FY 2009-10 Budgeted
Operating Expenses <sup>B</sup>	\$12,697,000	\$13,645,000	\$14,215,000	\$14,603,000	\$14,609,000
Acquisition of Fixed Assets	\$2,658,000 <sup>C</sup>	\$1,697,000	\$1,665,000 <sup>D</sup>	\$1,175,000 <sup>E</sup>	\$2,203,500
Debt Reduction (Principal)	\$1,228,000	\$1,318,000	\$1,519,000	\$1,579,000	\$1,815,000
<b>Total Expenditures</b>	<b>\$16,583,000</b>	<b>\$16,660,000</b>	<b>\$17,399,000</b>	<b>\$17,357,000</b>	<b>\$18,627,500</b>

<sup>B</sup> Non-cash expenses such as amortization/depreciation and closure/post closure expenses are not included.

<sup>C</sup> In addition, the District committed to a \$677,000 lease/purchase of equipment.

<sup>D</sup> In addition, the District committed to a \$1,105,000 lease/purchase of equipment.

<sup>E</sup> In addition, the District committed to a \$1,050,000 lease/purchase of equipment.

### Cash Reserve

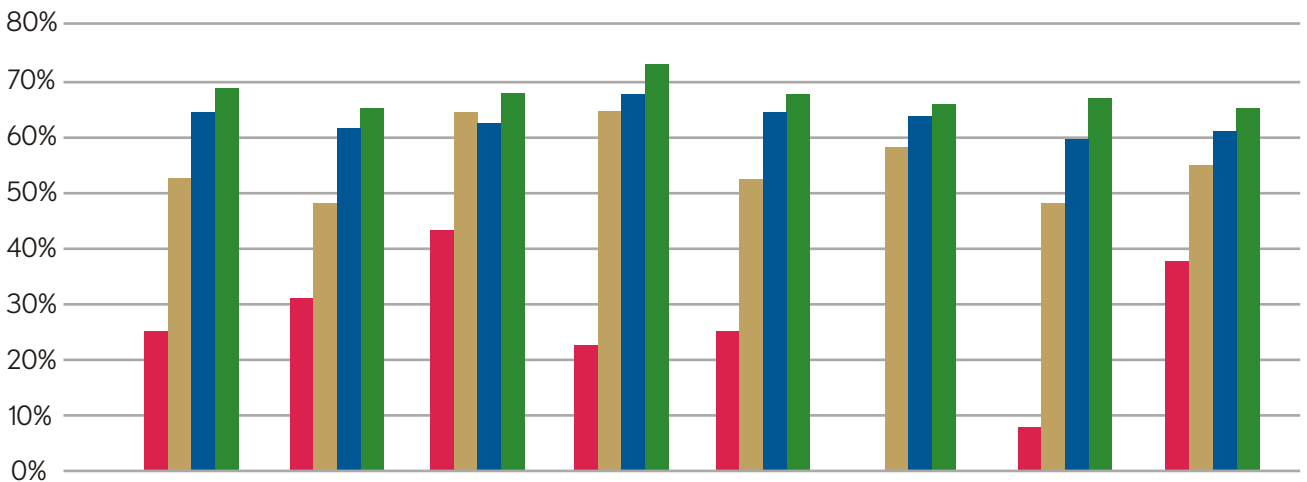
As of June 30, 2009 the District has reserves of more than \$8,000,000 in order to pre-fund major capital improvements, to sustain current tipping fees, and to meet state requirements for landfills. Reserves include: Environmental Impairment Fund, Closure/Post-Closure Fund, Rate Stabilization Fund, and an Undesignated Reserve Fund.



# Municipal Waste Diversion Rates

## 1995 through 2008

The California Integrated Waste Management Act of 1989, also known as AB 939, required each jurisdiction in the state to reduce waste 50% by the year 2000. The community infrastructure for waste reduction, reuse and recycling provided by the MRWMD, along with residential and commercial recycling, have allowed our member agencies to surpass the AB 939 mandate as shown in the chart below.



Year	Carmel	Del Rey Oaks	Marina	Monterey	Pacific Grove	Pebble Beach	Sand City	Seaside
1995	26%	31%	43%	23%	26%	NA	7%	38%
2000	52%	48%	65%	65%	52%	59%	48%	56%
2007	65%	62%	63%	67%	65%	62%	60%	61%
2008	69%	66%	68%	71%	67%	64%	66%	64%

## Mission Statement

It is our mission to provide the highest quality, cost-efficient, integrated waste management services to the greater Monterey Peninsula, while preserving our environment and protecting public health through the reduction, reuse, recycling, and safe disposal of our wastestream.



## Monterey Regional Waste Management District

14201 Del Monte Blvd., Marina, CA 93933  
831-384-5313 (tel)  
831-384-3567 (fax)  
[www.mrwmd.org](http://www.mrwmd.org)  
[www.keepmontereycountyclean.org](http://www.keepmontereycountyclean.org)



MRWMD saved the following resources by using New Leaf Reincarnation Matte, made with 100% recycled fiber and 50% post-consumer waste, processed chlorine free, and manufactured with electricity that is offset with Green-e® certified renewable energy certificates: 4 fully grown trees, 810 gallons of water, 2 million Btu of energy, 177 pounds of solid waste, and 299 pounds of greenhouse gases. [www.newleafpaper.com](http://www.newleafpaper.com)  
Calculations based on research by Environmental Defense Fund and other members of the Paper Task Force.